



Printing Your Future

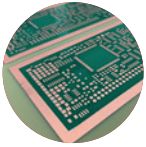
Imaging & Inkjet Solutions

Innovation in Motion

By your side to innovate and stand out .

ALTIX, leader in advanced imaging solutions

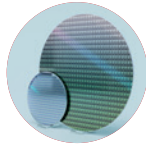
Since 1991, Altix has specialized in designing and producing advanced imaging solutions for the PCB/FPC (Printed Circuit Board), PCM (Photo Chemical Etching), and Semiconductor Packaging industries, earning a reputation for unwavering reliability and engineering excellence.



PCB/FPC



PCM



Semiconductor

With over a thousand units installed across more than 500 customers in multiple industries, Altix has developed deep expertise in delivering tailored solutions that meet customer's unique needs, seamlessly integrating advanced technologies to enhance performance and drive productivity.



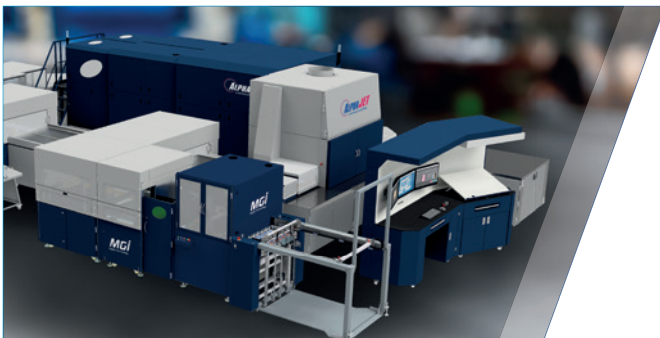
With dedicated sales and service teams in North America and Asia through its fully-owned subsidiaries, Altix ensures close communication and responsive support for all its customers, wherever they are in the world.



Altix HeadQuarter

The MGI Group

ALTIX, front runner in printed electronics within the MGI Group



MGI AlphaJet

Founded in 1982, MGI Digital Technology has established itself as a global leader in digital printing, finishing, and electronic printing. Listed on NYSE Alternext Paris, MGI generates 90% of its revenue internationally and achieves around 10% annual growth.

In 2024, following the successful collaboration on the Altijet inkjet solution, MGI acquired a majority stake in Altix. This strategic move empowers both companies to pursue new growth in inkjet printing technologies. By combining their global networks, advanced industrial resources and expertise, and leading-edge R&D, Altix and MGI are set to accelerate innovation and expand their global footprint.

With four manufacturing sites in France and Germany, and direct sales and service hubs in North America and Asia, the MGI Group ensures high levels of operational agility and responsiveness, meeting the evolving demands of its customers worldwide.



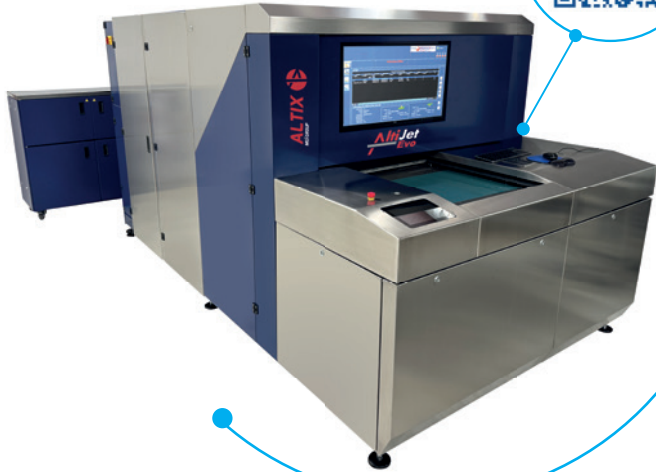
MGI Group HeadQuarter

MGI GROUP

Inkjet Additive Printing Solution



Inkjet Printer Panel | Semi-Auto or Fully-Auto Solutions

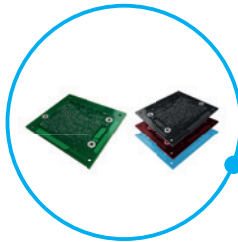


Process:
Exposure Area:
Resolution:
Light Engine:
Special Features:

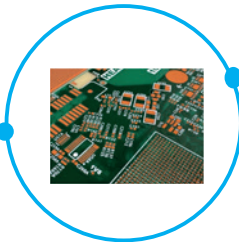
PCB Solder Mask and Legend
Up to 635x812 mm | 25"x32"
Min DAM 75 µm | 3 mils for Soldermask
Konica Minolta 1800i – Up to 18 Heads
High throughput with One-Pass technology
Legend module available
Auto-clean for Solder Mask and Legend modules
Panel quality control with full-scan-width technology
Multiple solder mask colors available
(Green, Blue, Black, Red)

	<p>MGI HD Elite Solder Mask Inks</p>	<p>Dedicated inks ensuring The highest definition Compatibility with the inkjet engine and substrates</p>
	<p>MGI HD Elite Legend Printing Ink</p>	

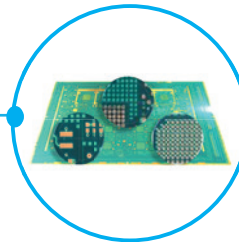
PCB Solder Mask



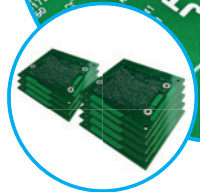
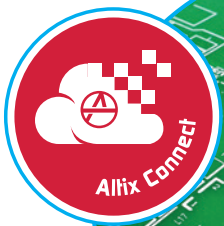
PCB Legend



PCB Check



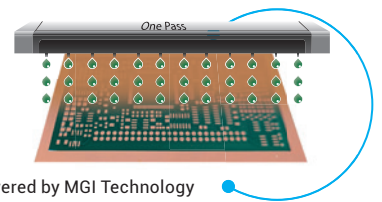
Compatible with
Altix Connect



Small/Mid Volume
Mass Production

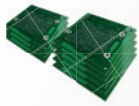
KEY FEATURES

- Stand-alone additive inkjet printing platform
- Multi-colour solder mask & legend MGI inks
- Easy to use external inking station
- Fully digital solder mask & legend printing
- Semi-automated process
- Industrial HD printheads
- AI driven AOI calibration and nozzle control



One Pass Powered by MGI Technology

ADIX UNO LEDS DMD

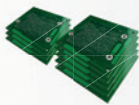


Prototyping, QTA,
Small to Mid Volume

Single Table Direct Imaging Panel or Wafer | Semi-Auto or Fully-Auto Solution

- Process:** Front to Back (IL), Image to Panel (OL, S/M, PSR)
Exposure Area: Up to 635x762 mm | 25"x30"
Resolution: Down to 8/12µm | 0.3/0.47 mil (Line & Space)
 Min DAM 25 µm | 1 mil for Soldermask
Alignment: +/- 6µm | 0.25 mil
Light Engine: High UV Power with 4LEDS or Laser + DMD
- Special Features:**
- Small Footprint with Dual Screen
 - Porous Vacuum Table
 - Automatic Mechanical Clamping system
 - DPC, Die Positioning Compensation Software
 - Additional Compact Automation Possible

ADIX duo LEDS DMD

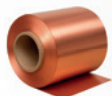


Small/Mid Volume
& Mass Production

Dual Table Direct Imaging Panel or Wafer | Semi-Auto or Fully-Auto Solution

- Process :** Front to Back (IL), Image to Panel (OL, S/M, PSR)
Exposure Area : Up to 635x762 mm | 25"x30" XL Function: Up to 1400x762mm | 55"x30"
Resolution : Down to 8/12µm | 0.3/0.5 mil (Line & Space)
 Min DAM 25 µm | 1 mil for Soldermask
Alignment : +/- 6µm | 0.25 mil
Light Engine : High UV Power with 4LEDS or Laser + DMD
 Either with Separate Photo Head or Beamlight™
- Special Features :**
- Dual Porous Vacuum Table | XL Mode
 - Automatic Mechanical Clamping system
 - DPC, Die Positioning Compensation Software
 - Additional Pass-Through Automation Possible

ADIX RtR LEDS DMD

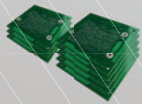
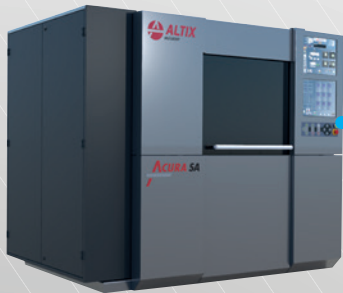


Small/Mid Volume
& Mass Production

Reel-to-Reel Direct Imaging Roll Web & Long Image/Board | Fully-Auto Solution

- Process :** Front to Back (IL), Image to Panel (OL, S/M, PSR)
Exposure Area : Up to 630x685 mm | 24.8"x27" Endless/Unlimited Exposure Length
Resolution : Down to 10 µm | 0.4 mil (Line & Space)
 Min DAM 25 µm | 1 mil for Soldermask
Alignment : +/- 6µm
Light Engine : Powered by High UV Power with 4 LEDs/DMD
- Special Features :**
- Customized Winder/Unwinder
 - Porous Vacuum Table
 - Mechanical Clamping system
 - Patented solution for long or continuous images

ACURA SA



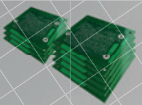
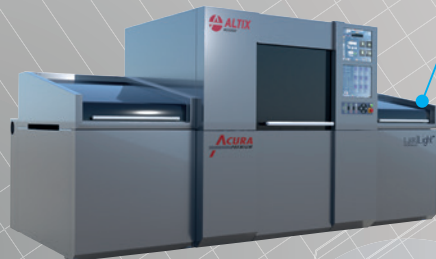
Prototyping, QTA,
Small to Mid Volume

Single- or Double-Sided UV Exposure Solution Panel | Semi-Auto Solution

Process : Front to Back (IL), Image to Panel (OL, S/M, PSR)
Exposure Area : Up to 610x762 mm | 24"x30"
Resolution : Down to 20 μm | 0.6mil (Line & Space)
 Min DAM 50 μm | 2 mils for Soldermask
Alignment : +/- 5 μm
Light Engine : LEDLight™, ScanBar, LED OmniLight™
Productivity : Up to 1.5 panels/min

- Special Features:**
- Process Inner Layer, Outer layers or/and Soldermask panels
 - Small Footprint
 - Multi PCB Processes (IL+OL+SM)
 - Engineered Vacuum Management
 - Easy cleaning with Rocking Upper Frame

ACURA PREMIUM



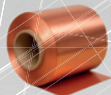
Small/Mid Volume
Mass Production

Single- or Double-Sided Exposure Solution Panel | Fully-Auto Solution

Process : Front to Back (IL), Image to Panel (OL, S/M, PSR)
Exposure Area : Up to 610x762 mm | 24"x30"
Resolution : Down to 20 μm | 0.6mil (Line & Space)
 Min DAM 50 μm | 2 mils for Soldermask
Alignment : +/- 5 μm
Light Engine : LEDLight™, LED OmniLight™, Collilight™ 5 or 8kW
Productivity : Up to 4 panels/min

- Special Features:**
- v - Process Inner Layer, Outer layers or/and Soldermask panels
 - Up to 5 panels per minute
 - Engineered Vacuum Management
 - Easy cleaning with Rocking Upper Frame

AcuReel



Small/Mid Volume
Mass Production

Reel-to-Reel Exposure Solution Roll Web | Fully-Auto Solution

Process : Front to Back (IL), Image to Panel (OL, S/M PSR)
Exposure Area : Up to 550x650 mm | 21.6"x25.6"
Resolution : Down to 20 μm | 0.6 mil (Line & Space)
 Min DAM 50 μm | 2 mils for Soldermask
Light Engine : LedLight, LED OmniLight, Scan bar LedLight, ColliLight 5kW & 8kW
Productivity : Up to 6 images/min

- Special Features :**
- Single- or Double-Side exposure
 - Customized Winder/Unwinder
 - Engineered Vacuum Management
 - Easy cleaning with Rocking Upper Frame
 - Stitching function for endless applications

World-Class Customer Services

ON-SITE SUPPORT



Technical expertise
Preventive maintenance
On-site support

REMOTE SUPPORT



Remote control
Rapid response
Expert Analysis

PREVENTIVE MAINTENANCE



Data-driven insights
Error analysis
Downtime reduction

SOFTWARE UPGRADES



New functionality
Seamless updates
Continuous performance

R&D SUPPORT



Customer driven innovation
Field feedback
Tailored solutions

PARTS & INVENTORY



Critical parts
Fast delivery
Operational reliability

APPLICATIONS SUPPORT



Experienced team
Customer-focused solutions
Comprehensive assistance

TRAINING



Efficient training
Expert instructors
Tailored sessions

North America:

Altix North America
United States, Canada, Mexico
Email: sales@altix.fr

Europe:

Altix France - HQ
Val-de-Reuil, France
Email: sales@altix.fr

Asia:

Altix China
China, Taiwan, Malaysia
Email: sales@altix.fr

www.altix.fr

