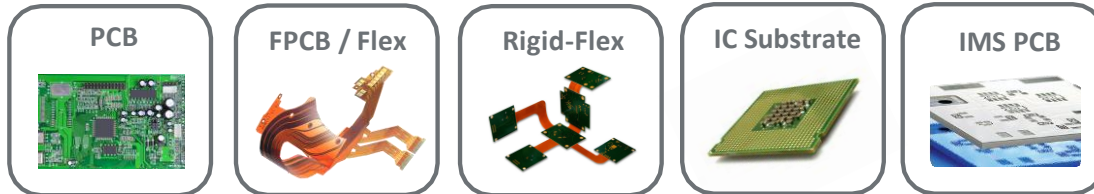


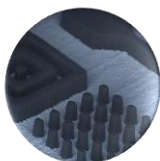
AFOSA_s LEDLight™

Semi-Automatic Soldermask / PSR UV Exposure



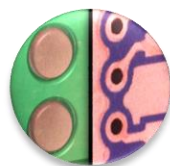
High Performance – High Resolution for QTA & Medium Production

Resolution



Down to
60µm | 2.4 mil Dam

Registration



±12µm | 0.5mil
AW / Panel

Throughput



Up to 2 sides per
minute

High Savings



High Power UV LEDs

AFOSA_s LEDLight™

High Power & Triple Wavelengths Led Light Source



Fully Intuitive & Friendly HMI

Easy Operating Quick Batch Change

High Power UV Leds – Ultimate Cost Saving

Innovative Single Sided Process (CMI Compatible)

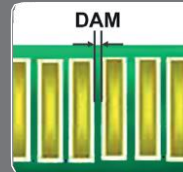
Afosa S LEDLight™ Specifications

APPLICATION	PCB • FPCB/Flex • Rigid-Flex • IMS PCB • IC Substrate
Process	Solder Mask / PSR & Outer Layer as a back-up
Exposure Area	Up to 610mm x 762mm • Up to 24" x 30"
Panel Thickness	0.05mm to 6mm • 0.002" to 0.236"
RESOLUTION	Min Dam 76µm • 3.0mil⁽¹⁾
Light Engine	LedLight™ – High power & multiple wavelength led light source
Light Intensity	≥ 100mW/cm ²
Collimation	≤ 5° max.
Declination	No declination
Uniformity	≥ 88% ⁽²⁾
Exposure Energy	100mJ/cm ² to 2000mJ/cm ²
Soldermask/PSR Resist	For all types & colors of ink: green, white, blue, red, black, etc.
Exposure Method	Single side – Upper side exposure
Exposure Contact	Soft or hard contact vacuum – CMI™ available
ALIGNMENT	±12µm • 0.5mil for Artwork to Panel (copper pad fiducials)
CCD Cameras	4 cameras (upper side) – all independently movable in horizontal plane
Lighting	Adequate lighting for copper pad detection
THROUGHPUT	Up to 2 sides/minute for energy within 700mJ/cm²⁽³⁾
Batch Changeover	≤ 4 minutes – Artwork change and cleaning, job setting update
SOFTWARE	ALTIX SUITE with 17" Touch Screen – Remote Maintenance Available
Languages	All languages available: English, Simplified & Traditional Chinese, Korean, German, French...
ERGONOMY	
Safety	Safety light curtain
Double Drawers	Same height for both operating trays
Basic Frame	Stainless steel covers (hoods)
ENVIRONMENT CONTROL	
Air Cleanliness	Hepa filter class 100 with over-pressurized exposure area
Artworks	Glass cooling system with regulation
GENERAL UTILITIES	
Power Supply	220/400/480V • 3 Phases • 50/60Hz
Air Supply	6~7 bars with 1.5 m ³ /min
Power Consumption	9 kW
Water Supply	20~30 l/min @3 bars or 20~46 l/min @2 bars (for glass cooling system)
UV source cooling	Water cooled with autonomous water chiller
Machine Weight	2,500kg • 5,500lbs
Dimensions (mm)	2,550mm (L) x 1,650mm (W) x 1,910mm (H) • 100" (L) x 65" (W) x 75" (H)

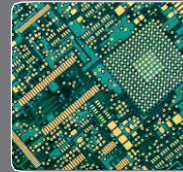
(1) depending on the process parameters • (2) the formula is Min/Max • (3) depending on the process



Best Cost Performance Efficiency with LedLight™ Mach5®
High Power & Triple Wavelength UV Led Scan System



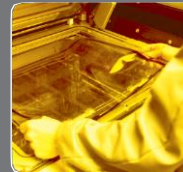
High Resolution:
60µm | 2.4 mil Dam thanks to Collimated LedLight™



High Throughput:
>700 Soldermask/PSR panels/day, Double Tray Fast Motion System



Very Accurate Registration:
±12µm | 0.5mil AW/panel



Quick Batch Change:
<4 minutes: Artwork Change & Cleaning and Job Setting Update



High Production Flexibility:
Double Batch Function
QTA, Samples, R&D

Designed by Altix - Afosa S - EN - y 20 / w 06 - All data mentioned on this document are not contractual and may be changed at anytime.



Manufacturing, Sales & Service:
Altix France – HQ
Email: central@altix.fr

Asia:
Altix China Shanghai,
Kunshan, Zhuhai Offices
Email: central@altix.cn

North America:
Altix NA, Inc.
United States, Canada, Mexico
Email: central@altix.us

Imaging with us!



www.altix.fr