



ALTIX

Direct Imaging & Contact Printers

ADVANCED DIRECT IMAGING
by **ALTIX**

ADIX SA duo

LEDs DMD

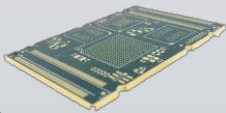


Automation Ready



The Fastest Direct Imaging Solution

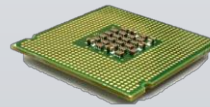
Printed Circuit
Board | PCB



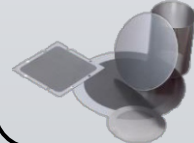
Flex Circuit
Rigid-Flex



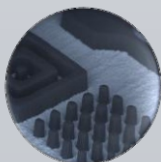
Advanced
Packaging



Chemical
Milling | PCM



Resolution



Down to
15µm | 0.6mil

Registration



±8µm | ±0.3mil
Image to Panel

Throughput



Up to 2.5
panels/min

Twin Table



Enhanced
Productivity

Ergonomic Solution For Higher Production Efficiency



Integrated & Intuitive HMI

Power & Emergency Controls

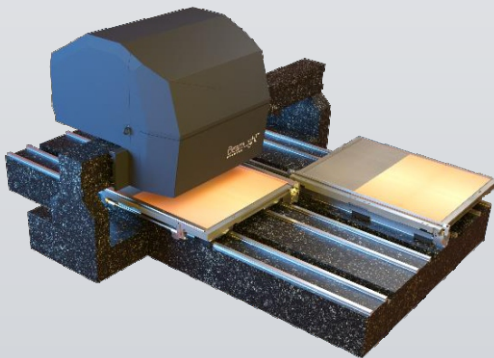
Trackball

Vision Control

Vacuum Control

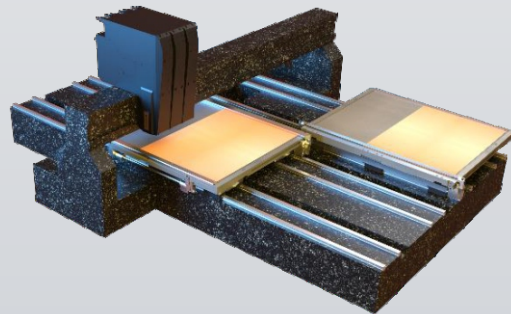
Tailored Light Sources To Fit Any Production Needs

High-Power Multi-Wavelength BeamLight™



OR

Individual ALDS Power 4+ Photoheads



Key Specifications

Exposure Area	Min: 228mm x 254mm 9"x10" –Max: 635mm x 762mm 25" x 30" on each table Large panel size: up to 1,300mm x 762mm 51" x 30" on synchronized table		
Panel Thickness	0.05mm to 8mm – 6 kg max 0.002" to 0.315" – 13 lbs max		
Light Configuration	Individual ALDS Power 4+ Photoheads		BeamLight™
Light Engine	LS15	LS30	Multichannels
Resolution–Line / Space	15µm/15µm (0.6/0.6 mil) ⁽¹⁾	30µm/30µm (1.2/1.2 mil) ⁽¹⁾	30µm/30µm (1.2/1.2 mil) ⁽¹⁾
Resolution –Dam	25µm (1 mil) ⁽¹⁾	50µm (2 mils) ⁽¹⁾	50µm (2 mils) ⁽¹⁾
Resist Capability	From 10 to 2,000 mJ/cm² and above		
Wavelength	4 UV LED per photohead/channel from 365nm to 405nm		
Alignment	± 12µm ± 0.5mil – front to back ± 8µm ± 0.3mil –image to panel (on holes, vias, pad fiducials, etc...) ⁽²⁾		
CCD Cameras	"On the fly" detection process with movable cameras High resolution cameras with unique lightings		
Productivity	267 Sides/hour ⁽³⁾ –with BeamLight™ 610 x 457mm size @ 30mJ/cm²		
Dimensions & Weight	2.9m(L)x2.1m(W)x1.9m(H)–4,500 kg 114" (L) x 83" (W) x 75" (H) –9,900 lbs		
Automation	Altix's Pass Through/Flip Automation Solution (PT/F)		

(1) Depending on Photoresist, Surface Preparation and DES process

(2) With max deformation of the panel for tightest registration is ±0.004%

(3) Estimated time given as reference but can fluctuate according to the process adjustments



Europe:
Altix France – Headquarters
Manufacturing, Sales & Service
Europe, Africa, Middle-East

Asia:
Altix China
Sales & Service
China, Taiwan, South-East Asia

NorthAmerica:
Altix North America, Inc.
Sales & Service
United States, Canada, Mexico

Imaging with us!

www.altix.fr
sales@altix.fr