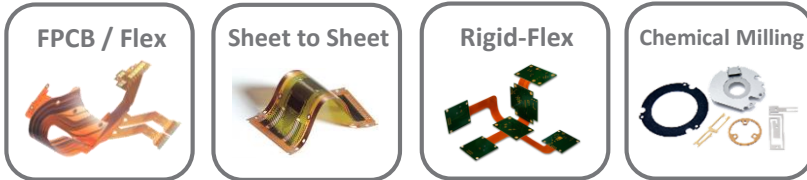


New



ADVANCED DIRECT IMAGING by ALTIX

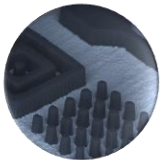
Roll to Roll Direct Imaging



ALDS-Power4+™
High Power LEDs
High Resolution DMD

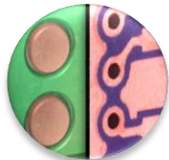
4 LEDs per Photo Head: 365/380/395/405nm
Dynamic Autofocus: ±8mm

Resolution



Down to
10µm | 0.4 mil

Registration



±8µm | ±0.3mil
Image to Panel

High
Throughput

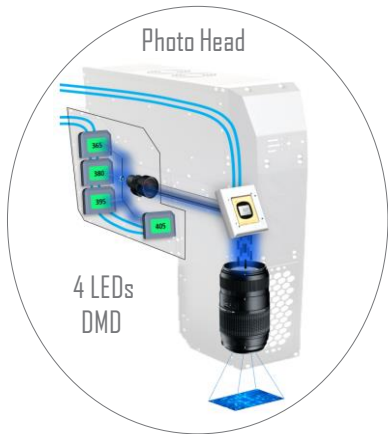


≥ 5100 prints / day

High Savings



-80%
Cost of ownership



ALDS-Power4+™
High Power LEDs
High Resolution DMD



4 LEDs per Photo Head for Higher Productivity and Printing Quality

High Accuracy Registration

Print on All Types of Photoresists & Solder masks

Industry 4.0 Compatible ✓

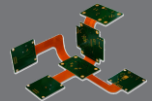


From 2 to 6 Photo Heads | Upgradable on site

ADIX Roll to Roll Specifications

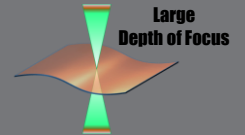
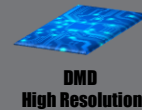
Applications

FPC, PCM, PCB, HDI Multilayers Flex Rigid Flex
From 190x190mm (7.5x7.5") up to 610x685mm (24x27")
Web thickness: 0.03 to 0.5mm (1.1 to 20mils)



Printing

Sophisticated Photo Heads for high throughput
Line & Space: up to 10/10µm (0.4/0.4mil)
Edge Roughness: up to ± 0,5µm (± 0.2mil)



Alignment

± 8µm | ± 0.3mil Image to Web material (Holes or Pads)
± 12µm | ± 0.5mil Side to Side



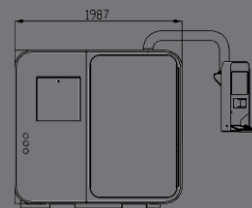
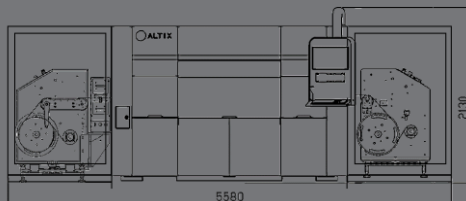
Special features

Stitching function (Continuous/Endless image)
Multi images connected together

Long Rigid Panel (PCB Semi auto mode)
Function for R&D and production departments



General Utilities



220/400/480V | 3 Phases | 50/60Hz
Air: 6~7 bars | 1.5m³/min
Water: 3 to 5 bars
5,580mm (L) x 1,987mm (W) x 2,130mm (H) | 220" (L) x 78" (W) x 83" (H)