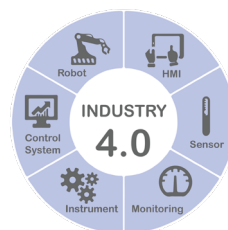
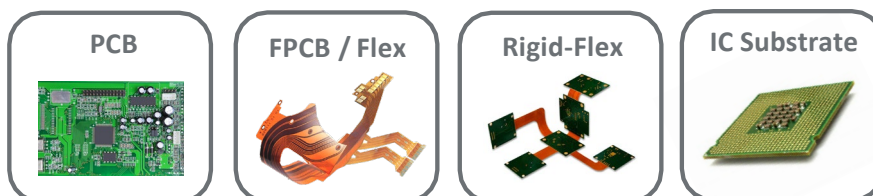
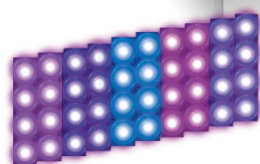


Full-Automatic Double Side Exposure



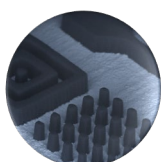
Higher Precision
Productivity
Cost Savings



MACH:3® & MACH:5®
LEDLight™

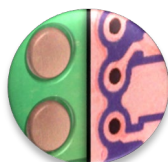
Best Imaging Solution - Best Cost/Performance Ratio

Resolution



Down to
50µm | 2 mil Dam

Registration



±8µm | ±0.3mil
AW/Panel

**High
Throughput**



Up to 4 panels per
minute

High Savings

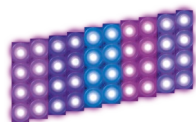


High Power
UV LEDs



For Soldermask/PSR

High Power & Multiple Wavelengths LedLight™ Source



LedLight™

MACH3® & MACH5®



Fully Intuitive & Friendly HMI

High Accuracy Registration

Print on All Kinds of Soldermask Inks

Best Cost/Performance Ratio

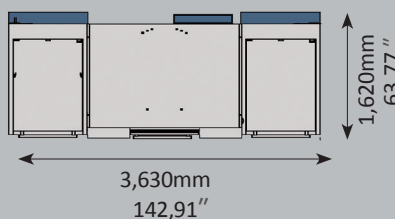
Acura Soldermask / PSR Specifications

| APPLICATION | PCB • FPCB/Flex • Rigid-Flex • IMS PCB • IC Substrate | |
|-----------------------|---|--|
| Process | Soldermask / PSR | |
| Exposure Area | Up to 610mm x 762mm | • Up to 24" x 30" |
| Panel Thickness | 0.05mm to 6mm | • 0.002" to 0.236" |
| RESOLUTION | Min Dam 50µm • 2mil (1) | Min Dam 75µm • 3mil (1) |
| Light Engine | Mach3® | Mach5® |
| Light Intensity | ≥ 135mW/cm² (instantaneous UV power) | 200mW/cm² (instantaneous UV power) |
| Collimation | ≤ 3° | ≤ 5° |
| Declination | No declination – Scanning system | No declination – Full array |
| Uniformity | ≥ 90% ⁽²⁾ | ≥ 88% |
| Exposure Spectrum | 3 LEDs wavelengths (365/395/405nm) | 5 LEDs wavelengths (365/385/395/405/415nm) |
| Exposure Energy | 50mj/cm² to 2000mj/cm² | 150mj/cm² to 5000mj/cm² |
| Soldermask/PSR Resist | For all types & colors of ink | For all types & colors of ink |
| Exposure Contact | Soft or hard contact vacuum – CMI™ available | Soft or hard contact vacuum – CMI™ available |
| THROUGHPUT | Up to 3 panels/minute for energy within 250mj/cm² ⁽³⁾ | Up to 4 panels/minute for energy within 250mj/cm² ⁽³⁾ |
| CCD Cameras | 8 cameras (4 per side) + 2 cameras for pre-alignment before exposure | |
| Lighting | Adequate lighting for copper pad detection | |
| ALIGNEMENT | ±8µm • 0.3mil for Artwork to Panel (copper pad fiducials) | |
| Batch Changeover | ≤ 4 minutes – Artwork change and cleaning, job setting update | |
| SOFTWARE | ALTIX SUITE with 17" touch screen | |
| Languages | All languages available: English, Simplified & Traditional Chinese, Korean, German, French... | |
| ENVIRONMENT CONTROL | | |
| Air Cleanliness | Hepa filter class 100 | |
| Temperature control | Exposure area Cooling system– Room temperature [0; + 3°C] | |
| Features | Stainless Steel covers | |
| GENERAL UTILITIES | | |
| Power Supply | 220/400/480V • 3 Phases • 50/60Hz | |
| Air Supply | 6~7 bars • 1.5 m³/min | |
| Power Consumption | 7 kW (for Mach3®) | 12 kW (for Mach5®) – chiller included |
| Water Supply | 5 l/min | |
| Machine Weight | 2,200kg • 4,850lbs | |

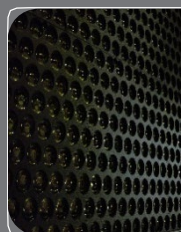
(1) depending on the process parameters • (2) the formula is Min/Max • (3) depending on the process

Small Foot Print & Fast Installation

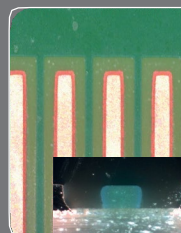
Top view



The Acura Soldermask foot print is smaller by 30% to 40% than all other solutions in the market. It is a unique all-in-one and plug and play solution that is easy to install: plug power, air & water and it is ready to produce!



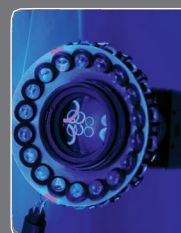
Best Cost-Performance Efficiency with LedLight™ Mach3® & Mach5®
High Power & Multiple Wavelengths UV Led Independently Adjustable



High Resolution: 50µm || 75µm
Multi-Wavelengths UV Led for Best Resolution & Higher Polymerization Efficiency on all Types & Colors of Solder Resists



High Throughput:
Mach3® : > 4000 Soldermask / PSR Panels per Day
Mach5® : > 5500 Soldermask / PSR Panels per Day



Very Accurate Registration:
±8µm | 0.3mil AW / Panel



Smart Remote Access:
TCP / IP Connection for Live Control & Troubleshooting



Manufacturing, Sales & Service:

Altix France – HQ

Email: central@altix.fr

Asia:

Altix China Shanghai,

Kunshan, Zhuhai Offices

Email: central@altix.cn

North America:

Altix NA, Inc.

United States, Canada, Mexico

Email: central@altix.us

Imaging with us!



www.altix.fr