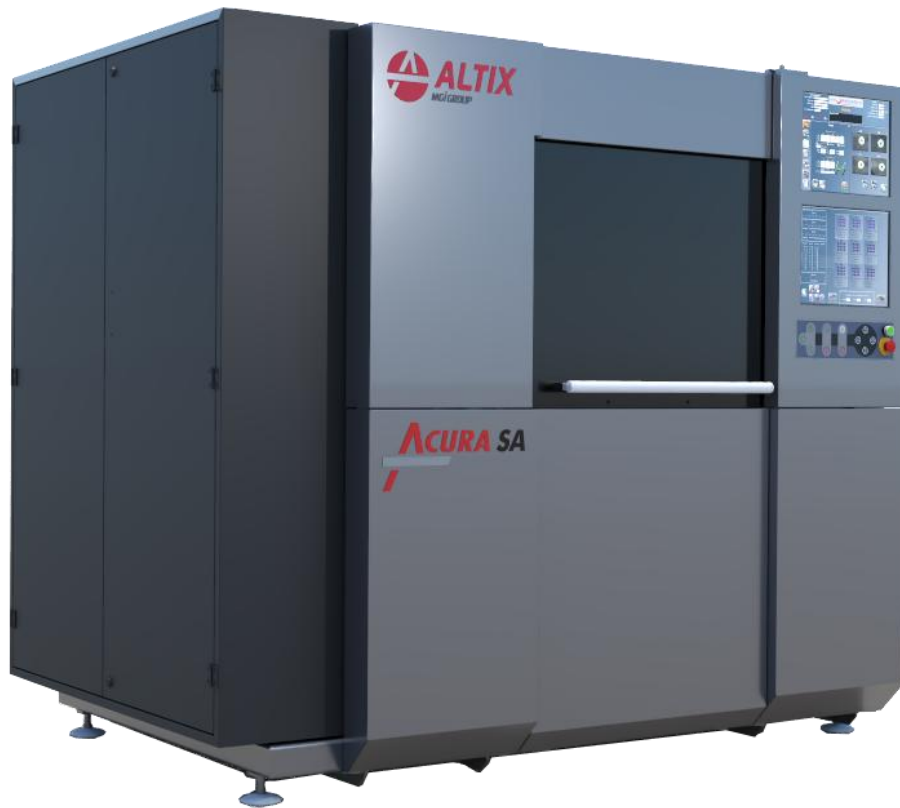
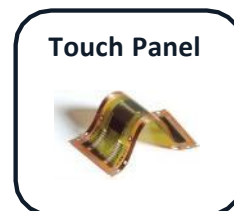
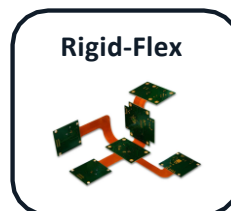
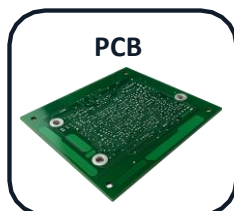
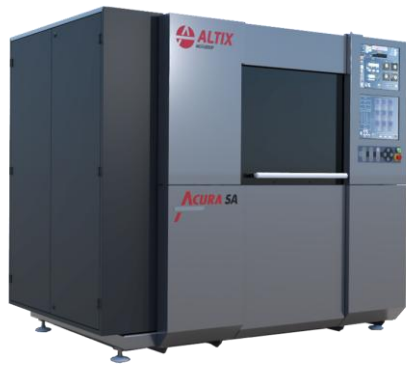


ACURA SA



CONTACT PRINTER SHEET TO SHEET





High Power LED Light Source for dry film and Solder Mask

Optimized architecture for a reduce footprint

Enhance alignment accuracy and repeatability

Intuitive & Friendly HMI – Dual Screen

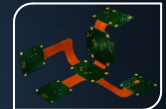
Low Cost of Ownership

Semi-Automatic Double Sided – Panel to Panel Exposure

ACURA SA

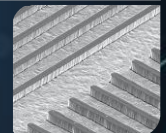
Applications

PCB, Chemical Etching, FPCB/ FLEX, Rigid-Flex, Touch Panel
Up to 610 x 762 mm | Up to 24" x 30"



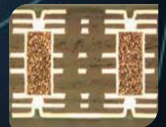
Resolution

Resolution down to: 25µm | 1mil L&S for dry film
Min Dam size: 75µm | 3mils for soldermask
Light Engine : LedLight, Omnilight



Registration

±5µm | ±0.2mil (Front to Back Registration)
±8µm | ±0.3mil (Image to Panel Registration)



Throughput

Up to 2 panels/minute for energy @30mJ/cm²
≤ 2 minutes – Artwork change and cleaning, job setting update



Best Cost Performance

High Efficiency with LedLight™ & OmniLight™ Light sources
Print on All types of Photoresists & Soldermasks
Smart Remote Access – Telemaintenance

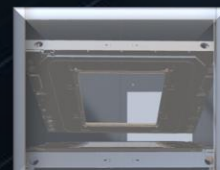


Unique Features



Artwork Check

Acura SA can verify the correct positioning of TOP/BOT artwork, preventing misloading.



Rocking Upper Frame

Wide opening angle for easy exposure room checks and efficient glass and artwork cleaning.



Manufacturing, Sales & Service:
Altix France – HQ
Email: sales@altix.fr

Asia:
Altix China
Shanghai, Kunshan
Office
Email: sales@altix.fr

North America:
Altix NA, Inc.
United States, Canada,
Mexico
Email: sales@altix.fr