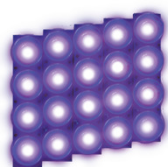
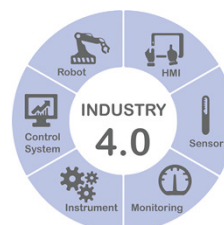
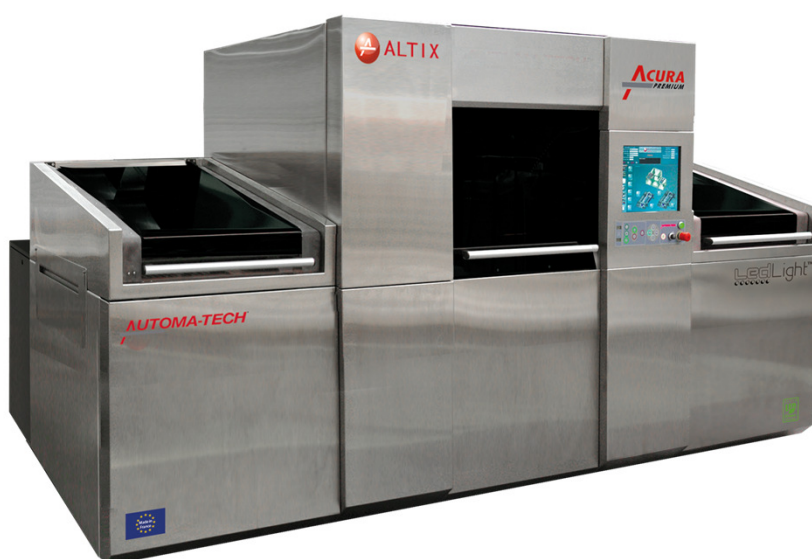
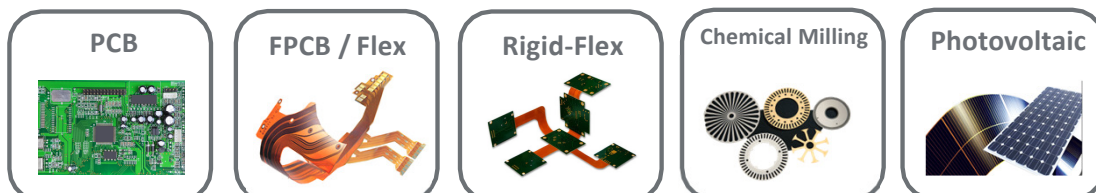


Full-Automatic Double Side Exposure for Inner Layers

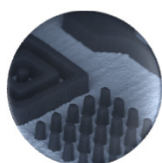


LEDLight™

Higher Precision
Productivity
Cost Savings

Best Imaging Solution – Highest Cost & Performance Ratio

Resolution



Down to
25µm | 1 mil Line & Space

Registration



±5µm | ±0.2mil
Front to Back

Throughput



Up to 5 panels per
minute

High Savings

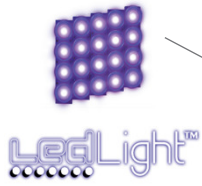


-85% Cost of
Ownership



For Inner Layers

UV Led Source



Fully Intuitive & Friendly HMI

High Accuracy Registration

Print on All Kinds of Photoresists

Highest Cost & Performance Ratio

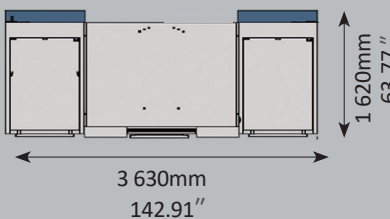
ACURA Premium Specifications

APPLICATION	PCB • FPCB/Flex • Rigid-Flex • Photo Chemical Milling • Photovoltaics
Process	Inner Layers
Exposure Area	Up to 610mm x 762mm • Up to 24" x 30"
Panel Thickness	Up to 2mm (optional up to 4mm) • Up to 78,7mils (optional up to 157mils)
RESOLUTION	25µm/ 25µm • 1mil/1mil ⁽¹⁾ (Line & Space)
Light Engine	LedLight™
Light Intensity	Up to 50mW/cm ²
Collimation	≤ 2°
Declination	No declination
Uniformity	≥ 85% / 90% ⁽²⁾ – depending on panel size
Exposure method	Soft or hard contact vacuum – CMI™ available
ALIGNMENT	±5µm • ±0.2 mil Artwork/Artwork Registration ±3µm • ±0.12 mil Repeatability
CCD Cameras	4 cameras
Mask	Compatibility Glass Mask & Film Mask
THROUGHPUT	4~5panels/minute ⁽³⁾
Batch Change	Less than 5 minutes for Artworks & Settings change
SOFTWARE	ALTIX SUITE with 17" touch screen
Languages	All languages available: English, Chinese, Korean, German, French...
HIGH YIELD	
Air Cleanliness	Hepa filter class 100
Features	Electrostatic neutralizer, Stainless steel (Frames & Covers)
GENERAL UTILITIES	
Power Supply	220/400/480V • 3 Phases • 50/60Hz
Air Supply	6~7 bars • 1.5 m ³ /min
Power Consumption	6 kW
Water Supply	No water supply required

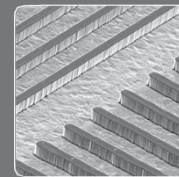
(1) depending on the process parameters • (2) the formula is Min/Max • (3) depending on the process

Small Foot Print & Fast Installation

Top view

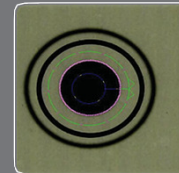


The Acura Premium footprint is smaller by 30% to 40% than all other solutions in the market. It is a unique all-in-one and plug and play solution that is easy to install: plug power & air only (no cooling water) and it is ready to produce!



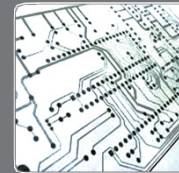
High Resolution: 25µm L/S

Unique optical solution with a collimation angle of ≤1.6° and uniformity enable higher resolution and tolerances



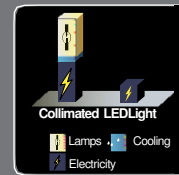
High Registration: ± 5µm

Highest Front to Back registration on all areas of the panels thanks to its unique algorithm



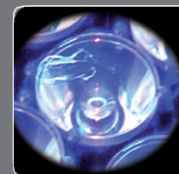
High Image Quality

No artwork distortion and high image stability over the production thanks to its LedLight™ generating no heat



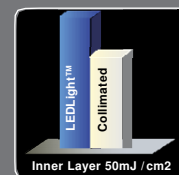
High Cost Savings: >\$50K/year

- 6kW power consumption only
- No cooling water requirement
- No lamp required
- Low maintenance & no down time



Altix's LedLight™ Technology, it is:

- Up to 50mW/cm² UV intensity
- Image all types of photoresists
- Constant intensity over 15,000hrs, representing >25 million panels



High Productivity: up to 5 panels/min

- >6000 panels/day and over years:
- No down time to replace lamps
- ≤ 5min to change batch/lot
- Same exposure time over years



Manufacturing, Sales & Service:

Altix France – HQ

Email: central@altix.fr

Asia:

Altix China Shanghai,

Kunshan, Zhuhai Offices

Email: central@altix.cn

North America:

Altix NA, Inc.

United States, Canada, Mexico

Email: central@altix.us

Imaging with us!



www.altix.fr