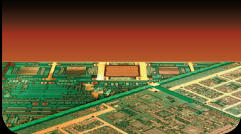


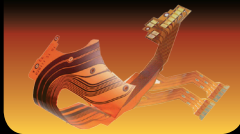
# **ACURA** LEDLight™ *PREMIUM*

## Full-Automatic Double Side Exposure for Inner Layers

PCB



FPCB / Flex



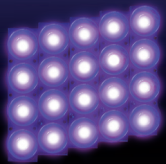
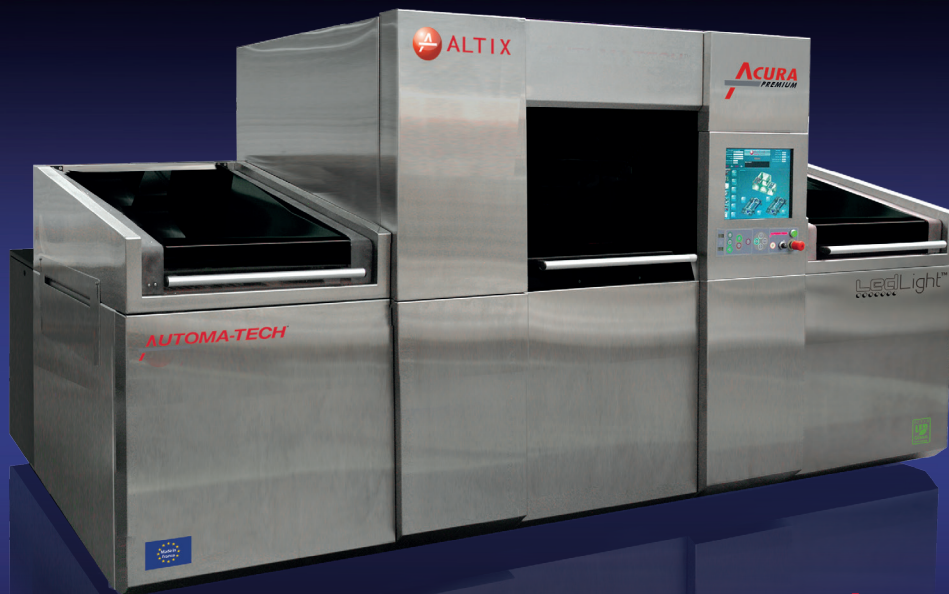
Rigid-Flex



Photo Chemical  
Milling



Photovoltaics



LEDLight™

**Higher** Precision

Productivity

Cost Savings

**Best Imaging Solution - Highest Cost & Performance Ratio**

**Resolution**

25µm | 1 mil  
Line & Space

**Registration**

±5µm | ±0.2mil  
Front to Back

**Throughput**

Up to 5  
Panels/minute

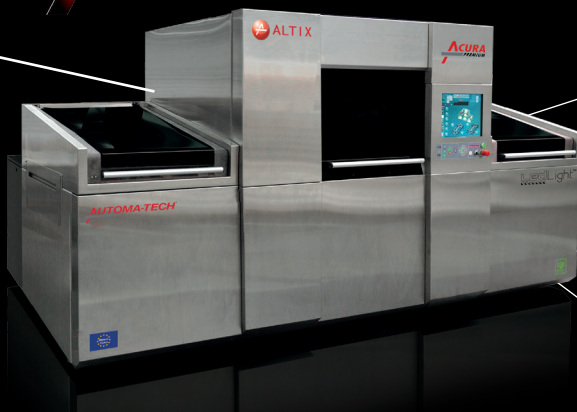
**High Savings**

-85% Cost  
of Ownership



# ACURA PREMIUM for Inner Layers

UV Led Source



Fully Intuitive & Friendly HMI

High Accuracy Registration

Print on All Kinds of Photoresists

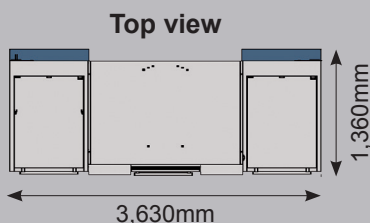
Highest Cost & Performance Ratio

## ACURA Premium Specifications

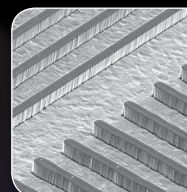
| APPLICATIONS      | PCB • FPCB / Flex • Rigid-Flex • Photo Chemical Milling • Photovoltaics      |
|-------------------|------------------------------------------------------------------------------|
| Process           | Inner Layers                                                                 |
| Exposure area     | Up to 610mm x 762mm • Up to 24"x30"                                          |
| Panel Thickness   | Up to 2mm (optional up to 4mm) • Up to 78.7mils (optional up to 157mils)     |
| RESOLUTION        | 25µm/25µm • 1mil/1mil <sup>(1)</sup> (Line & Space)                          |
| Light Engine      | LedLight™                                                                    |
| Intensity         | Up to 50mW/cm <sup>2</sup>                                                   |
| Collimation       | ≤ 1.6°                                                                       |
| Declination       | No Declination                                                               |
| Uniformity        | ≥ 85% / 90% <sup>(2)</sup> - depending on panel size                         |
| Exposure method   | Soft or hard contact vacuum – CMI™ available                                 |
| ALIGNMENT         | ±5µm • ±0.2mil Artwork/Artwork Registration<br>±3µm • ±0.12mil Repeatability |
| CCD Cameras       | 4 cameras                                                                    |
| Mask              | Compatibility Glass Mask & Film Mask                                         |
| THROUGHPUT        | 4~5 panels/minute <sup>(3)</sup>                                             |
| Batch change      | Less than 5 minutes for Artworks & Settings change                           |
| SOFTWARE          | ALTIX SUITE with 17" touch screen                                            |
| Languages         | English, Simplified & Traditional Chinese, Korean, German, French...         |
| HIGH YIELD        |                                                                              |
| Air cleanliness   | Hepa filter class 100                                                        |
| Features          | Electrostatic neutralizer, Stainless steel (Frames & Covers)                 |
| GENERAL UTILITIES |                                                                              |
| Power Supply      | 220/400/480V • 3 Phases • 50/60Hz                                            |
| Power Consumption | 6kW                                                                          |
| Air Supply        | 6~7 bars • 1.5m <sup>3</sup> /min                                            |
| Water Supply      | No water supply required                                                     |

(1) depending on process • (2) depending on image area • (3) depending on photoresist and energy required

### Smallest Foot Print & Fastest Installation

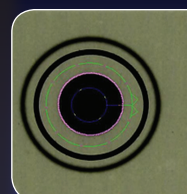


The Acura Premium foot print is smaller by 30% to 40% than all other solutions in the market. It is a unique all-in-one and plug and play solution that is easy to install: plug power & air only (no cooling water) and it is ready to produce!



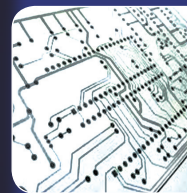
#### Higher Resolution: 25µm L/S

Unique optical solution with a collimation angle of ≤1.6° and uniformity enable higher resolution and tolerances



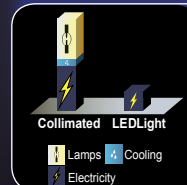
#### Higher Registration: ±5µm

Highest Front to Back registration on all areas of the panels thanks to its unique algorithm



#### Highest Image Quality

No artwork distortion and high image stability over the production thanks to its LedLight™ generating no heat



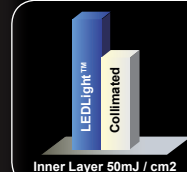
#### High Cost Savings: > \$50K/year

- 6kW power consumption only
- No cooling water requirement
- No lamp required
- Low maintenance & no down time



#### Altix's LedLight™ Technology, it is:

- Up to 50mW/cm<sup>2</sup> UV intensity
- Image all types of photoresists
- Constant intensity over 15,000hrs, representing >25 million panels



#### High Productivity: up to 5pnls/min

- >6,000 panels/day and over years:
- No down time to replace lamps
- ≤ 5min to change batch/lot
- Same exposure time over years



# ALTIX

Manufacturing, Sales & Service:

Europe: Altix France – HQ

Email: central@altix.fr

Taiwan: Altix Asia

Email: central@altixasia.com

Direct Sales & Service:

Asia: Altix China

Shanghai, Kunshan,

Zhuhai Offices

Email: central@altix.cn

North America:

Altix NA, Inc.

West Coast, Middle West

and East Coast

Email: central@altix.us

Imaging with us!



www.altix.fr