

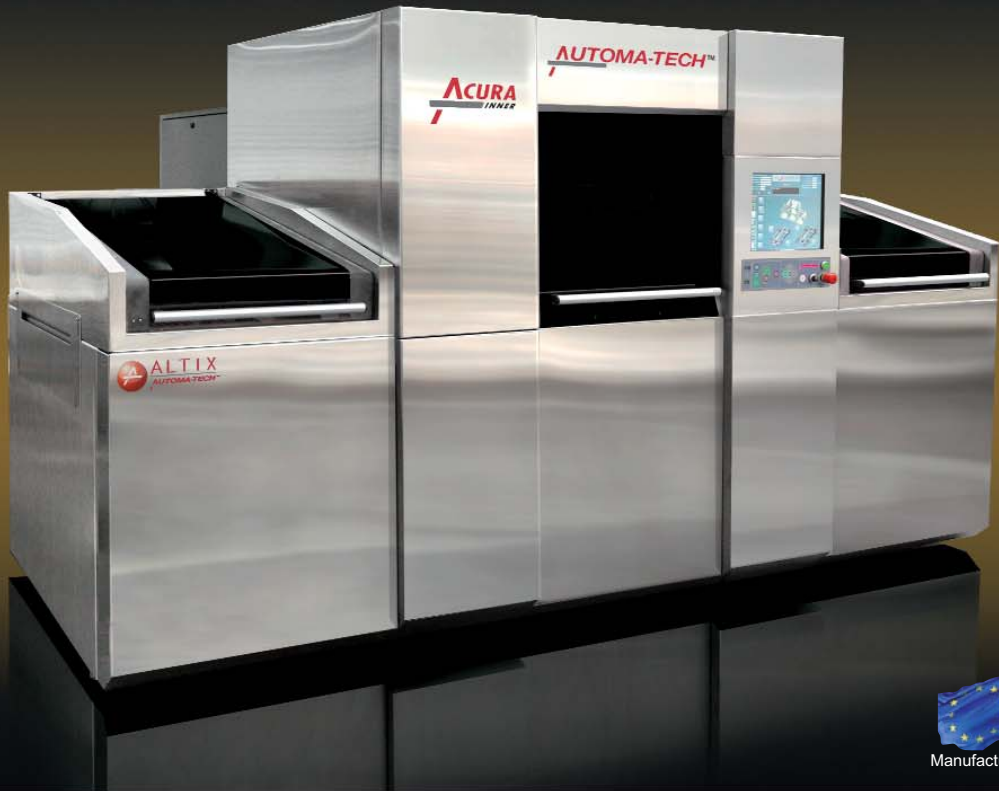
ACURA Series



ALTIX
AUTOMA-TECH™

Smart imaging solutions

ACURA
INNER



Manufactured in Europe

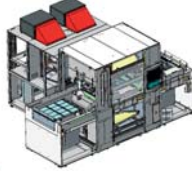
Automatic Double Sided Exposer
Dedicated to
Innerlayer

ROBUSTNESS

Stainless steel ultra rigid structure

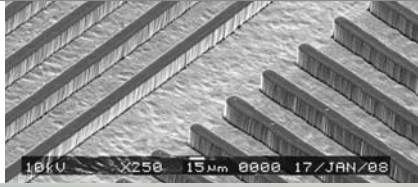
The Acura is the result of a proven design provided by the most advanced 3D CAD system used in the industry.

The ultra rigid structure provides vibration-free stability guaranteeing accuracy is maintained year after year. The Acura will meet your highest productivity needs, with more than 5 double sided exposed panels per minute.



HIGH RESOLUTION & PRODUCTIVITY

HDI Capabilities



ALTIX - Automa-Tech™ concentrated its efforts to deliver an equipment able to produce High Density Interconnection (HDI) boards with all the latest fine line design technologies.

With imaging resolution down to 15/15 µm L/S; and drastically reduced mechanical cycle time, the Acura reaches the highest standards in resolution and productivity.

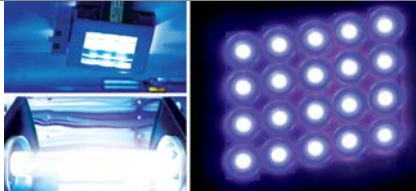
3 TYPES OF LIGHT SOURCE

ALTIX - Automa-Tech™ boasts the most advanced collimated light in the industry. Through this light source Acura can achieve a resolution down to 15µm with an adequate resist and process.

The new LED Light™ source through its high efficiency and long lifetime adds to these performances dramatic savings in running costs keeping the same productivity for most of the resists.

OptiLight™ delivers industry's best light angle (10°) for a non collimated light source.

Full choice depending on process



HUMAN MACHINE INTERFACE (HMI)

Graphic User Interface & Event Logging



A state of the art touch screen graphical user interface enables easy operations, such as: quick job set ups, parameters monitoring, diagnosis and process optimization.

On-screen step-by-step instructions guide Operators through safe and error-free manufacturing.

The highly capable Event Logging feature sets industry standards for its comprehensive, real-time process control; enabling users to make right process decisions at the right time

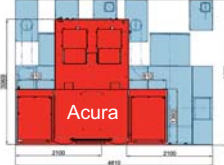
SMALL FOOTPRINT

Double side exposure like no other

The Acura is a direct response to Customer's requests for increased productivity at the lowest cost per image. It also provides the smallest foot print possible with extra large panel capability (610 x 760mm / 24" x 30").

Whichever the light source choice: Collimated, LED Light™ or OptiLight™, or the manufacturing process you will use with the Acura, the system will only occupy 60% of the total foot print as compared to conventional dual single sided exposer.

Dual single side exposure foot print vs Acura



WORLDWIDE SERVICE

ALTIX - Automa-Tech™ service and support



All ALTIX - Automa-Tech™ equipment from manual, semi-automatic to fully automatic exposer are backed up by an extensive service and support network.

With service and support coverage in Asia, Europe and North America, the Company has an unbeatable position to meet and exceed Customer expectations.

Multiple worldwide spare parts storage locations will ensure continued production of your equipment with excellent up time.

ACURA: DOUBLE SIDED AUTOMATIC EXPOSURE SYSTEM CHARACTERISTICS

Exposure Light Source	Light source Lamp Collimation angle	Collimated light LED Light™ or OptiLight™ 5kW or 8kW short arc lamp or 8kW extended arc lamp < 1.5° Collimated light LED Light™, < 10° OptiLight™
Panel	Panel size Panel thickness	Up to 610 x 762mm (24" x 30") 0.05mm to 6.0mm
Productivity	Innerlayers (IL)	Up to 5 per minute Depending on process
Alignment Capabilities	Artwork to artwork Repeatability	+/- 5µm (after vacuum) +/- 3µm (after vacuum)
Resolution	HDI compatible	Down to 25µm Line and Space
Registration Modes		2 to 4 CCD
Artwork	Change over time Glass artwork	Less than 2 minutes Compatible
Cleanliness	Overpressurized	Hepa filter, Class 100
Construction	Stainless Steel	Frame and covers (stainless steel inside machine & outside)
HMI (Human Machine Interface)	Graphic Color Interface	Multilanguage, intuitive software. Events Logging and SPC capabilities
General Utilities (Collimated Light Version)	Power supply Air supply Weight Dimensions	230/400/480 Volts, 50/60 Hz, 25kW Over 6 bar (1,5m³/min) 3350kg W: 3630mm (143") D: 3060mm (121") H: 2056mm (81") (+290mm (12") with Operator sliding door open)

ACURA INNER



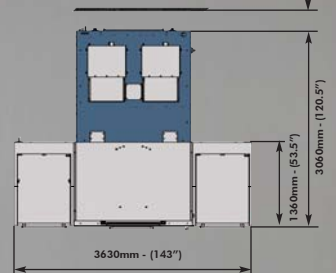
Collimated Light, LED Light™ or OptiLight™

Front view



Dimensions for
Collimated Light version

Top view



ALTIX AUTOMA-TECH™

27100 Val de Reuil - France
Tel : +33 (0)2 32 63 36 36
Fax : +33 (0)2 32 63 36 37
central@altix-automatech.com
www.altix-automatech.com

Imaging with us !